

NOTES1:

- UL Standard
- 1. Rated voltage/current : 300V / 14.5A
- 2. Withstanding voltage : AC1600V/1Min.
- 3. Ratings : Use group B 300V AC/DC
Use group D 300V AC/DC

NOTES2:

- 1. Dimension shall be interpreted per ASME Y14.5-2009
- 2. Pitch : 5.0mm, Poles : N=02~14P
- 3. Operating temperature: -40°C~+105°C
- 4. Undimensioned tolerances:

Pitch range in mm	Nominal dimension range		mm	mm	mm	mm	mm	mm	mm
	Over	Tolerance							
TO 6	±0.15	±0.20	±0.30	±0.30	±0.50	±0.70	±1.00	±1.30	±2°
TO 10									
TO 24									
TO 30									
TO 60									
TO 100									
TO 150									

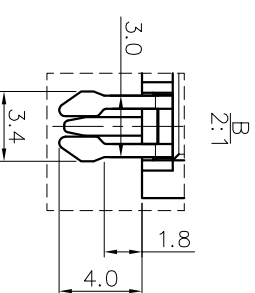
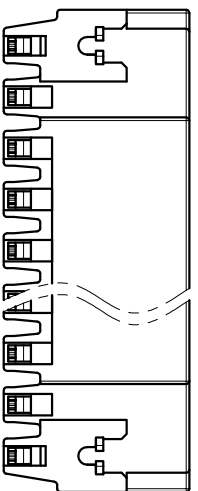
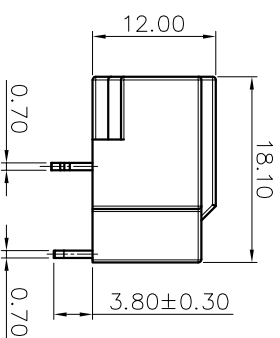
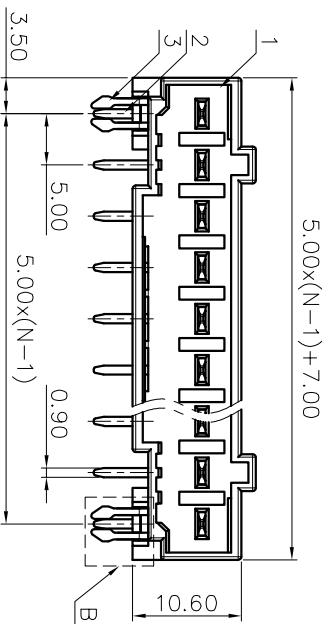
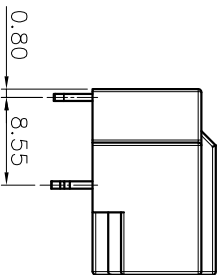
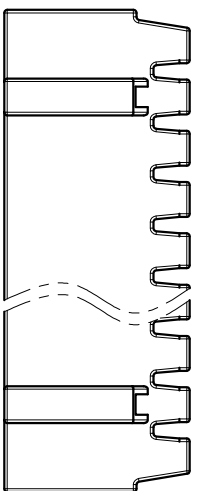
5. RoHS Compliance

Ordering Information

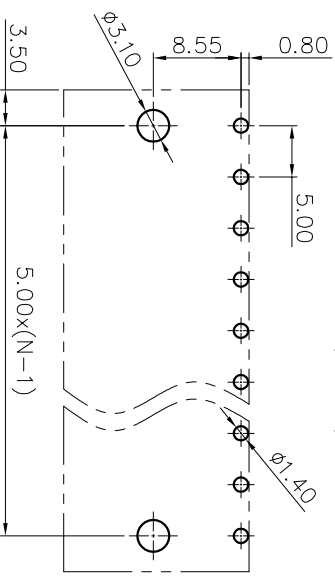
JL9EDGRC - 500 XX B 0 1

Pitch 500=500PH
No. of pins 2P~15P
Housing Color B=Black G=Green U=Blue R=Red W=White Y=Yellow D=Orange
Packing 0=Pe bag A=Troy T=Tube

REVISION RECORD			
REV	ECN	DESCRIPTION	DATE



PCB LAYOUT(5-14P)



ITEM	NAME OF PART	MATERIAL	NOTES
4	Pin	Copper alloy	Sn Plated
3	Pin	Copper alloy	Sn Plated
2	Pin	Copper	Sn/Au plated
1	Housing	PA66+GF	UL94V-0

DRAW	LICHAO LIU	SCALE	FIT	PART NO.	JL9EDGRC-500XXB01
	CHECK	LICHAO LIU	UNIT		mm
APPROVE	G. Y. L	SIZE	A4	SHEET	1/1
PRD J		PROJ			

JILIN 东莞市锦凌电子有限公司
DONGGUAN JINLING ELECTRONIC CO., LTD